

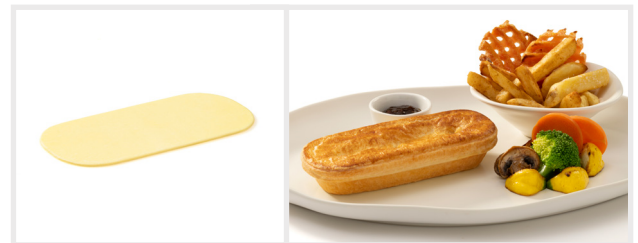
long pie

Savoury > Long Pie Shell and Long Puff Pie Top



170mm Long Savoury Pie Shell

170mm Long Puff Pie Top



Pastries	Product Code	Units Per Carton	Baking Instructions
170mm Long Savoury Pie Shell	PBL170	56	210-215°C for 18-20 mins
170mm Long Puff Pie Top	PTL170	112	210-215°C for 18-20 mins

Please note the above oven temperatures and baking times are a guide only.

For more information on our complete range of products and services visit:

readybake.com.au Pastries for all occasions



long pie

Savoury > Long Pie Shell - Suitable for Quiche



170mm Long Savoury Pie Shell



Pastry

170mm Long Savoury Pie Shell (for Quiche)

Product Code

PBL170

Units Per Carton

56

Baking Instructions

170-180°C for 14-16 mins

Please note the above oven temperature and baking time is a guide only.



Detailed baking instructions and product sizing specifications for all products in the Ready Bake range can be accessed by scanning the QR Code.

For more information on our complete range of products and services visit:

readybake.com.au Pastries for all occasions

